



Partnership Opportunities

Kobwin Children's Center
Ugandan Missionary Housing



The Need

Housing Shortage

It is a necessity to provide on-site housing at Kobwin Children's Center for safety and convenience of our missionaries. There are some rentals in surrounding communities, but there is not the added benefit of security provided at Kobwin Children's Center. Also, some missionaries do not feel comfortable living in the community.

Maximizing Space

Currently we are using structures that were originally intended for a rehabilitation center for child soldiers at Kobwin for missionary housing. These are small, round-hut structures, not ideal for missionary housing.

Missionary Shortage

With the construction of our primary school building, we have been able to accept more children into our school, but we also need to hire more teachers and childcare staff to serve them well. In addition, our setting is one that attracts young families with children because of the added benefit of education for their children at our school. Currently we have no available housing to hire additional staff or families.

Missionary Care

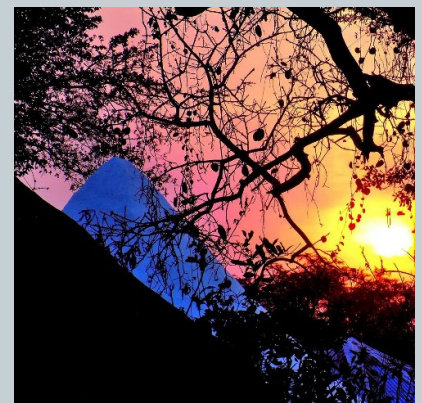
Our ability to care for the fatherless in our community hinges on our ability to provide quality care, administrative leadership, and a professionally operated children's center. In order to achieve those goals, we must be able to provide value to our staff with housing that is acceptable in our remote area. By caring for our Ugandan missionaries, we create unity and an environment where each individual is freed from burdens that might hold them back from their potential and ability to serve God with their respective giftings.



Nearby Kobwin village.



Round hut structures.



Sunset at Kobwin Children's Center.

Proposal

Short description: Duplex with 2 three-bedroom apartments, accommodating 2 Ugandan missionary families. This would free up space in the round-hut structures to accommodate more singles and interns.

Estimated Time of Construction: 4 months

Total Cost: \$60,000

Our construction manager will oversee the project and progress reports will be provided on a monthly basis.

Give

Checks

Make out to New Hope Uganda Ministries and mail to,

NHUM

PO Box 154

Belle Fourche, SD 57717

Online

Go to www.newhopeuganda.org/give and click on "Donate in the US".

* *There is a 3% processing fee through our online processor so we suggest giving via check or add the 3% to your giving.*

Your Contribution

New Hope Uganda Ministries is a 501(c)3 tax-exempt organization with the EIN # 95-4570304. No goods or services will be provided in exchange for your contribution. Therefore, your contribution will be tax-deductible. In accordance with the IRS, tax-deductible contributions are made with the understanding New Hope Uganda Ministries has complete control and discretion of donated funds. This discretion is in accordance with our mission to bring the Fatherhood of God to the fatherless. Donor preferences will be honored when given.

Learn more about 2018 partnership opportunities

www.newhopeuganda.org/get-involved/needs



Ugandan missionary family.



Teacher at Kobwin Primary School.



Kobwin Clinic nurse.



2018 Kobwin Staff

Bringing the Fatherhood of God to the fatherless.

donations@nhum.org—PO Box 154 Belle Fourche SD 57717—605-717-0315